



Participants to Owners Growing our Love INC Movement

How does Love INC grow? One person at a time.

Participation

**“Wisdom brings strength, and knowledge gives power.”
Proverbs 24:5**

Just by reading this newsletter, you’re choosing to participate in our Love INC mission. We hope you’ll continue to walk with us on this journey of transformation just like Becky did. From Becky’s first call into the Connection Center, to becoming an enthusiastic volunteer, Becky has seen Jesus change her life, and she’s ready to tell her story.

Why did you first call Love INC?

Love INC had helped my friend and I hoped they could help me. I needed a bed for my grandson and didn’t know where to turn. The Love INC team was encouraging. It was nice to have someone to turn to.

What did you gain from your first New Heights class?

I really enjoyed my Faith & Finances class. I signed up because I have always had trouble with my finances. But what I really gained was friends. This class helped me find people I needed in my life. I had been so lonely before and now I have true friends.

How did you meet Jesus?

I’ve been an atheist all my life. Love INC helped me find Jesus. I think Jesus was always there, but I never knew He was there. I met a really good friend through Love INC. One day I was thinking about her and about the church I was attending with her, and a worship song I liked started playing. As the music played I felt Jesus in me. That’s when I knew He was real.



Mission

To mobilize local churches to transform lives and communities in the name of Christ.

Vision

To see the Christian churches united in purpose and fully engaged in lovingly coming alongside people in need offering hope and healing through Jesus Christ.

Contact

Information

PO Box 224
Libby, MT 59923

Office Phone:
(406) 334-2016

Connection Center:
(406) 293-6497
loveincslc@gmail.com

www.loveincslc.com





“Each of you should use whatever gift you have received to serve others, as faithful stewards of God’s grace in its various forms.” – I Peter 4:10

Our volunteers are dedicated, generous, and all-in—and some days, it’s hard to keep up! From delivering furniture to patching ceilings, there’s never a dull moment. Every person we meet has a story unfolding, and even in the hard chapters, we trust God is writing something good. The best is still to come.

I’d like to introduce you to **Jen**, a volunteer through Troy Christian Fellowship. Jen serves once a week in the Connection Center. She always comes in with a huge smile and a truly caring heart. With a testimony of life transformation, Jen is committed to helping others to thrive and not just survive.



“One of the first things that really stood out to me through Redemptive Compassion was the idea of offering a hand-up instead of just a handout. Instead of giving money to fix a problem, we look for ways to come alongside people—like helping fix a car, move furniture, or run errands. I just love that we focus on building relationships, not just writing information down and moving on. Serving in the Connection Center really feels like where God wants me to be. I think I’ve grown the most in learning how to have compassion and empathy for people, but not carry everything home with me. My role is just to be compassionate and trustworthy—someone on the phone who truly cares. And honestly, we’ve got such a great team.”

Our committed community is making an impact.



Thank you!

TALLY HOE
Excavating Contractor



LIBBY SPORTS



WILD HEART

His Unified Body

Kootenai River Realty



Libby Ministerial Association

Troy Ministerial Association

Pival Electric & Plumbing Co.



NORTHERNLIGHTS
THE POWER OF LOCAL SERVICE

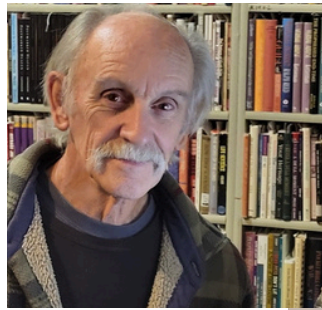
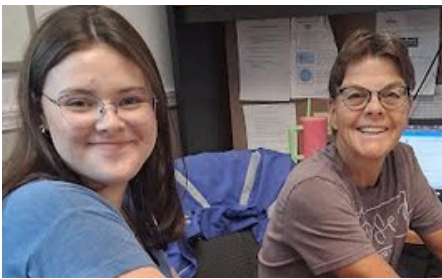
Ownership



Paul said it best in 1 Corinthians 11:1. "Follow me as I follow Christ."



It is said that a picture is worth a thousand words. I hope you can see our love for Jesus, His Church, and our neighbors. We are committed to Love INC's mission, and are inviting you to join us today.



JOIN OUR TEAM
To mobilize local churches to transform lives and communities in the name of Christ.
love inc South Lincoln County

- Bridge of Hope
- Eagle Valley Ministries
- Church of God
- Libby Assembly of God
- Libby Baptist Church
- Nazarene Church
- Stillwater Fellowship
- Three Lakes Community Bible Church
- Troy Assembly of God
- Troy Christian Fellowship
- Troy Community Baptist
- Yaak Community Church

We are grateful for our church partners who support Love INC financially, lift us in prayer, and volunteer in so many ways. It is our joy to partner with you.



I nvitation



Spring in northwest Montana is beautiful—but many in our community are still struggling. Nearly 1 in 4 in Libby and over 1 in 3 in Troy are living in poverty.

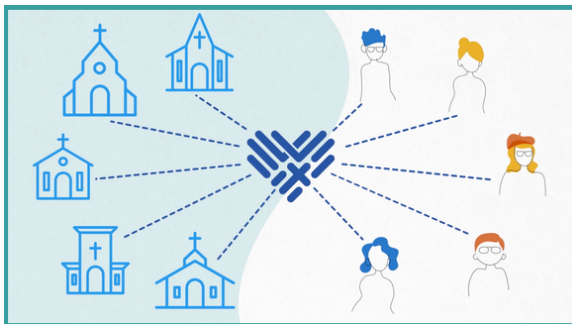
At Love INC, we see this as an opportunity. Together, we're building relationships and offering practical help—ramps, meals, rides, furniture, and encouragement—while walking alongside people as they rebuild their lives.

We're grateful for the strong foundation already in place and the partners who make this work possible. This spring, we're growing—and there's a place for you.

In 2026, we're focusing on People, Promotion, and Permanence. That includes sustaining key staff, pursuing a permanent location, and expanding programs like New Heights (returning this fall).

We're trusting God to provide the \$42,500 needed for these next steps—and we'd love for you to be part of the story.

If you are ready to engage, we are ready to partner with you.



- Dynamic prayer teams
- Connection Center team
- Helping with repairs, yardwork, changing oil, etc
- Becoming a financial partner
- Splitting wood, delivering furniture, etc
- Crafting encouraging prayer cards
- Driving a new friend to a medical appointment



Amanda's smile is contagious and she lives a full life. She wanted us to know that even though she can not volunteer at this time, she is excited about Love INC and really enjoys our newsletters. Thank you for the encouragement, Amanda, and welcome to the team.

"I love your NEWSLETTERS. They are very well done and so informative."